

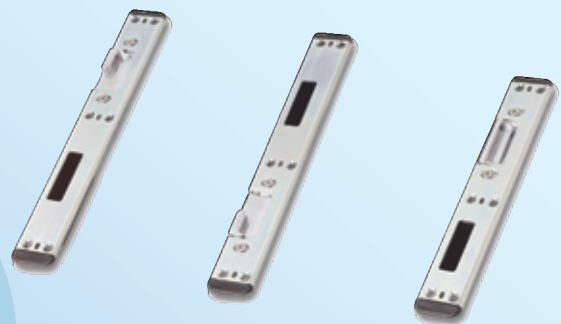
### FEATURES & BENEFITS

- Designed to meet the requirements of PAS23 and PAS 24
- Licensed by Secured by Design
- 10 Year Guarantee
- Available as 30mm, 35mm and 45mm Backsets, with 16mm face bar
- Non-handed lock mechanism with reversible sash bolt to minimise stock requirements
- Snib facility as standard on all locks
- Central brass deadbolt throws 22mm to prevent unauthorised entry
- Accepts standard 92mm unsprung handles and euro profile cylinders (operates with all BS and DIN specification cylinders and most other types of cylinders)
- Split spindle for lever/pad applications -choice of length available
- Bi-directional throw of locking features -enhanced anti-jemmy feature
- Twin high security forged brass hooks for anti-separation resistance - 10mm engagement into keeps
- Hooks deadlock in the fully thrown position
- 6000 Series adjustable steel keeps giving  $\pm 2.00\text{mm}$
- Continuous keep available
- Precision adjustable rollers for enhanced performance and weather sealing
- Easy-fit packer system for alternative profiles
- Optional shoot bolt engagement for additional security
- Single and French door (slave lock unit) application

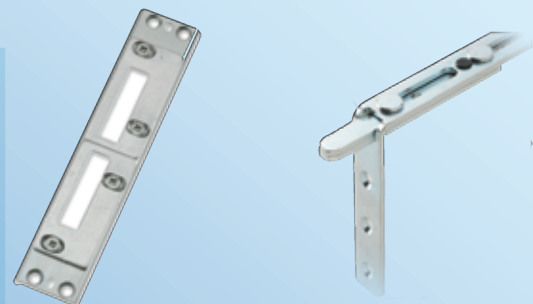
### LOCKING MECHANISM



### KEEPS (6000 SERIES)



### SHOOT BOLT (OPTIONAL)

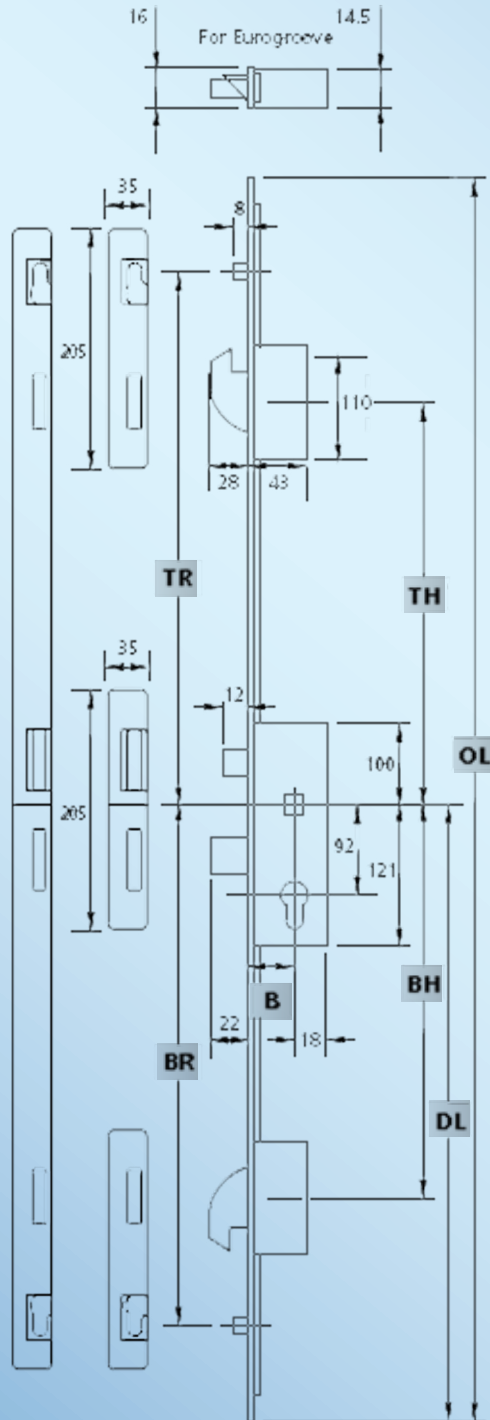


To select the required 2 hook 2 roller MPL part number, use the tables below to determine:

1. The backset
2. The overall length of the unit
3. The position of the hooks

### KEY

<b>B</b>	Backset	<b>TR</b>	Top Roller
<b>DL</b>	Datum Line	<b>BH</b>	Bottom Hook
<b>OL</b>	Overall Length	<b>BR</b>	Bottom Roller
<b>TH</b>	Top Hook		



Bottom of Door

Diagram illustrates product in locked position. Not to scale.

Winlock reserve the right to change specification without notice.

All dimensions are in mm and are nominal

### OPTION 1

B	DL	OL	TH	TR	BH	BR	Part No.	Box Qty
30	1050	2250	610	715	610	715	6730-00-85AA	5
35	"	"	"	"	"	"	6735-00-85AA	"
45	"	"	"	"	"	"	6745-00-85AA	"

### OPTION 2

B	DL	OL	TH	TR	BH	BR	Part No.	Box Qty
30	1050	2250	730	835	750	855	6730-00-85AA	5
35	"	"	"	"	"	"	6735-00-85AA	"
45	"	"	"	"	"	"	6745-00-85AA	"

### OPTIONAL EXTRAS (Suitable for options 1&2 above)

B	SLAVE UNIT	SHOOT BOLTS	MAINTENANCE
30	•	•	All moving parts should be lightly lubricated using a light non-acidic mineral oil (e.g. "3 in 1") twice per year and the surface cleaned with a soft damp cloth. The product may need to be adjusted and fixings tightened to ensure a satisfactory operation.
35	•	•	
45	•	•	

### TECHNICAL INFORMATION

Corrosion resistance:	Plated to BS EN 1670 Grade 4
Operation:	Function test 100,000 cycles

### MATERIALS

Lock case:	Steel BZP CR3 Passivate + Seal
Face bar:	Steel BZP CR3 Passivate + Seal
Hooks and dead/sash bolt:	Forged brass satin chrome plate
Rollers:	Steel BZP CR3 Passivate + Seal
Shoots:	Steel BZP CR3 Passivate + Seal
Keeps:	Steel BZP CR3 Passivate + Seal
Continuous keep bar	Steel BZP CR3 Passivate + Seal